



JAMES & JAMES
ESTATE AND LETTING AGENTS

t: 01903 958770

e: info@jamesandjamesea.co.uk

119 George V Avenue | Worthing | West Sussex | BN11 5SA

BUYING | SELLING | LETTINGS | MORTGAGE ADVICE



JAMES & JAMES
01903 958770
FOR SALE

28 Quicksilver Street
Worthing, BN13 1FN

Offers over £300,000



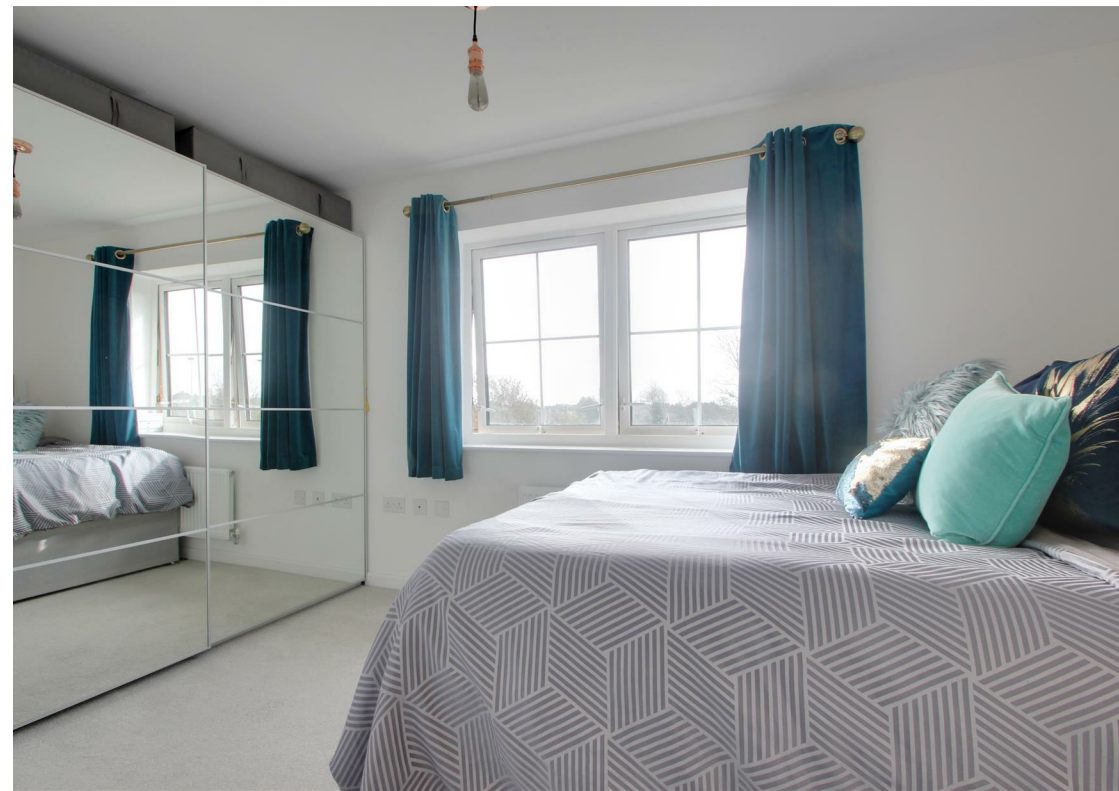
28 Quicksilver Street

Worthing, BN13 1FN

James & James Estate Agents are delighted to offer for sale this two double bedroom end terrace house located within the popular Cissbury Chase Development, Goring By Sea. Built in 2014, the property benefits from the remainder of a 10 year NHBC guarantee.

Accommodation briefly comprises entrance hall, modern kitchen, lounge/dining room, first floor landing, master bedroom with en suite, further double bedroom and a modern family bathroom. Externally the property boasts a well maintained SOUTH rear garden, low maintenance front garden and a private off road parking space. **VIEWING HIGHLY RECOMMENDED.**

- Two Double Bedroom
- End of Terrace House
- Cissbury Chase, Goring By Sea
- Master Bedroom With En Suite
- Modern Kitchen & Bathroom
- Double Glazing
- Gas Central Heating
- Energy Efficient Home
- Two Off Road Parking Spaces
- SOUTH Rear Garden
- Viewing Highly Recommended





Kitchen
9'6 x 6'4 (2.90m x 1.93m)

WC

Lounge
18'9 x 13'4 (5.72m x 4.06m)

Bedroom One
13'2 x 11'5 (4.01m x 3.48m)



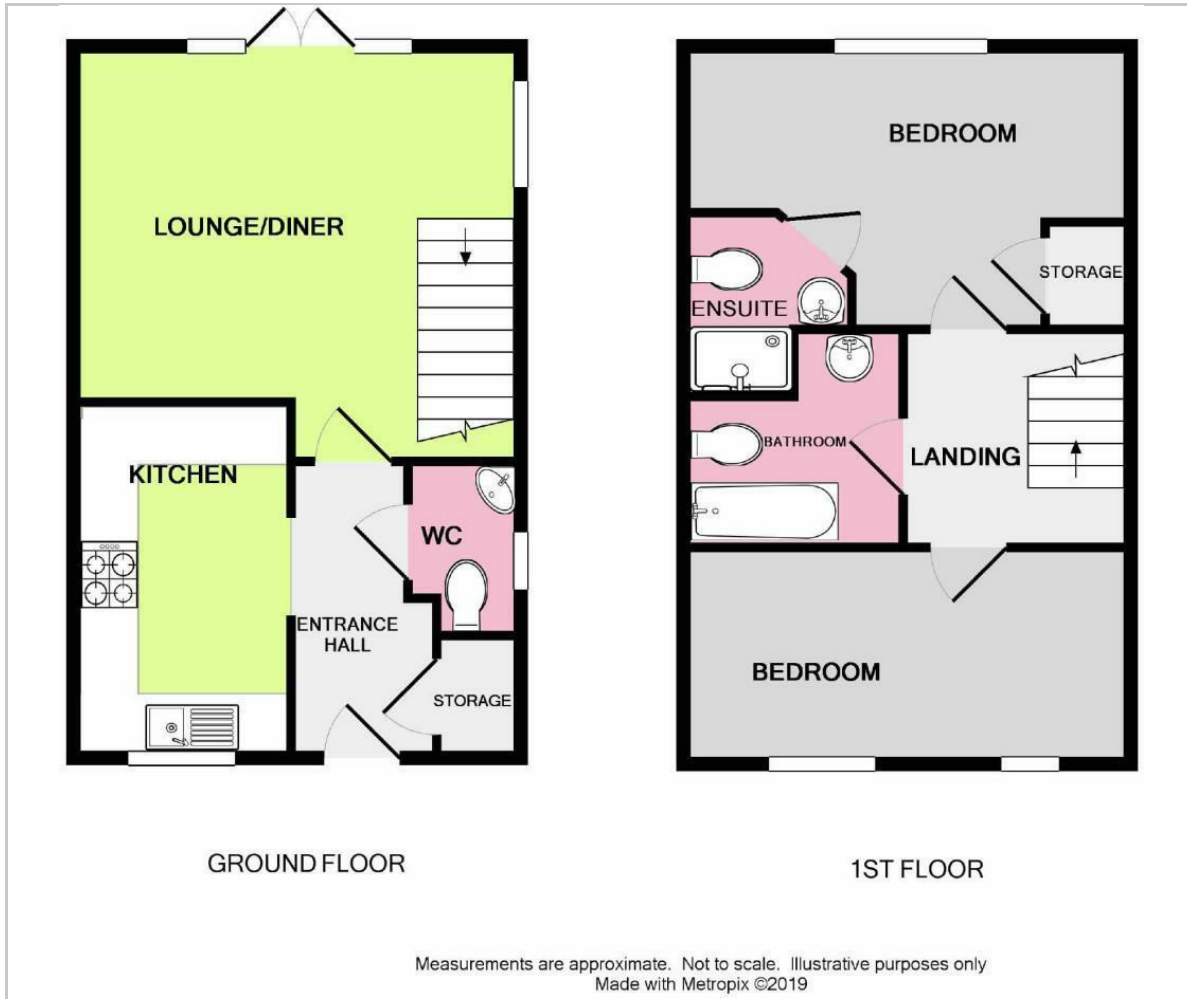
En Suite

Bedroom Two
13'2 x 8'1 (4.01m x 2.46m)

Family Bathroom



Floor Plan



Viewing

Please contact our Worthing Office on 01903 958770 if you wish to arrange a viewing appointment for this property or require further information.

These particulars, whilst believed to be accurate are set out as a general outline only for guidance and do not constitute any part of an offer or contract. Intending purchasers should not rely on them as statements of representation of fact, but must satisfy themselves by inspection or otherwise as to their accuracy. No person in this firm's employment has the authority to make or give any representation or warranty in respect of the property.

Area Map



Energy Efficiency Graph

